



BUILDING SAFETY DEPARTMENT

2101 O'NEIL AVENUE • CHEYENNE, WY 82001

Email: building@cheyennecity.org • Phone: (307)637-6265

Visit Our Website: www.cheyennecity.org

Pole Barn Construction Guide

How to use this guide: This Guide is designed for buildings which are a maximum of 2,400 square feet. (Maximum width of 40', and Maximum length of 60'). Larger buildings must be engineered.

How to begin the process: Complete and submit a "Residential Building Permit Application", the following items must be included along with the application:

- Plot Plan
- Full Set of Building Plans

***Pole barns are considered accessory buildings and must meet all setback requirements per city code.**

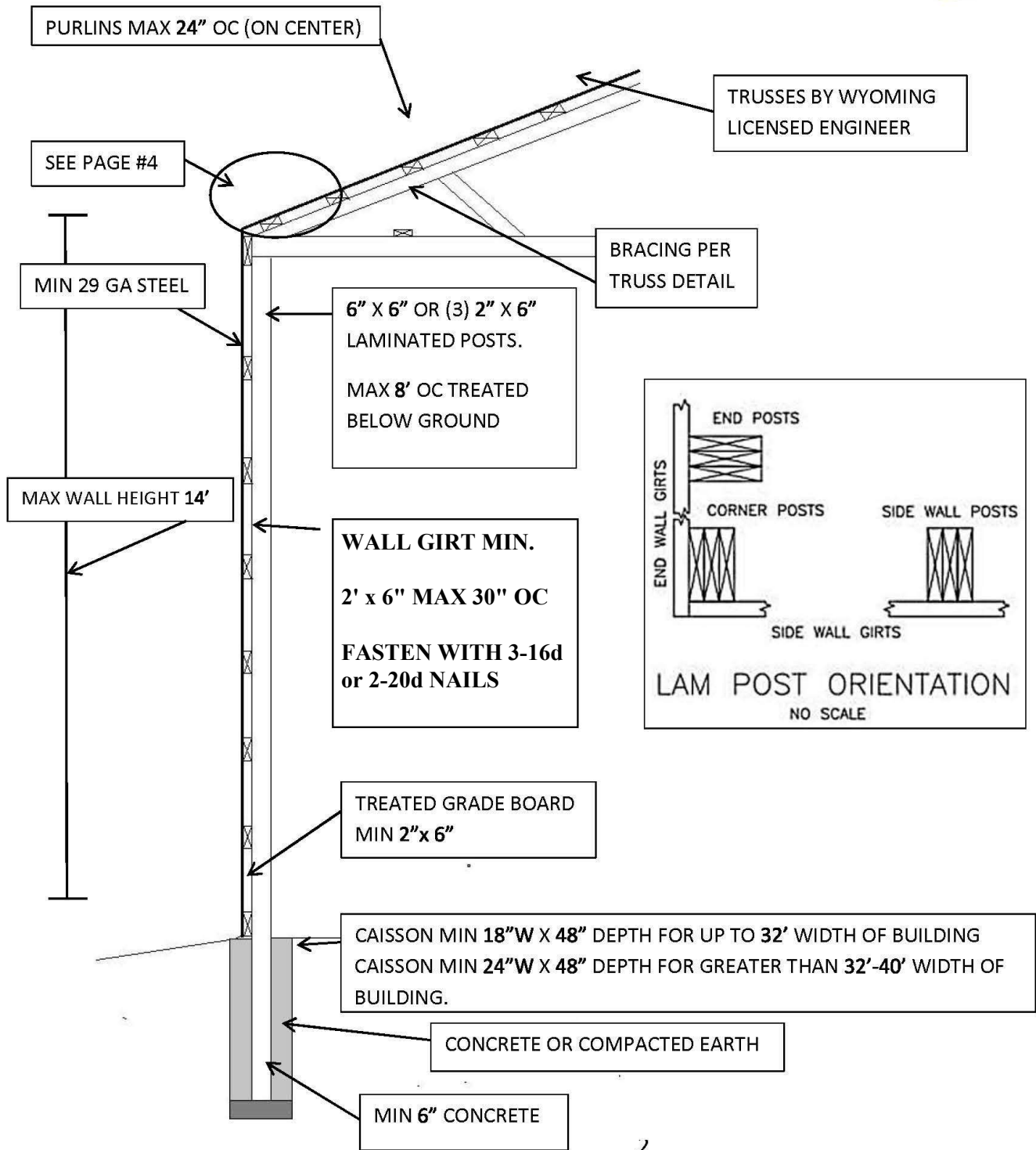
Building Plans: The following pages are approved methods for pole barn construction in The City of Cheyenne without the need for additional engineering. **Pole barns that do not meet the standards of these guidelines will be required to be designed by a Licensed Wyoming Engineer.**

Building codes: Be advised that the governing building codes for The City of Cheyenne are the 2021 International Codes and 2020 National Electrical Codes.

Fees: Fees are based on the fair market valuation of materials and labor. (see; Building and Planning & Development fee schedule)

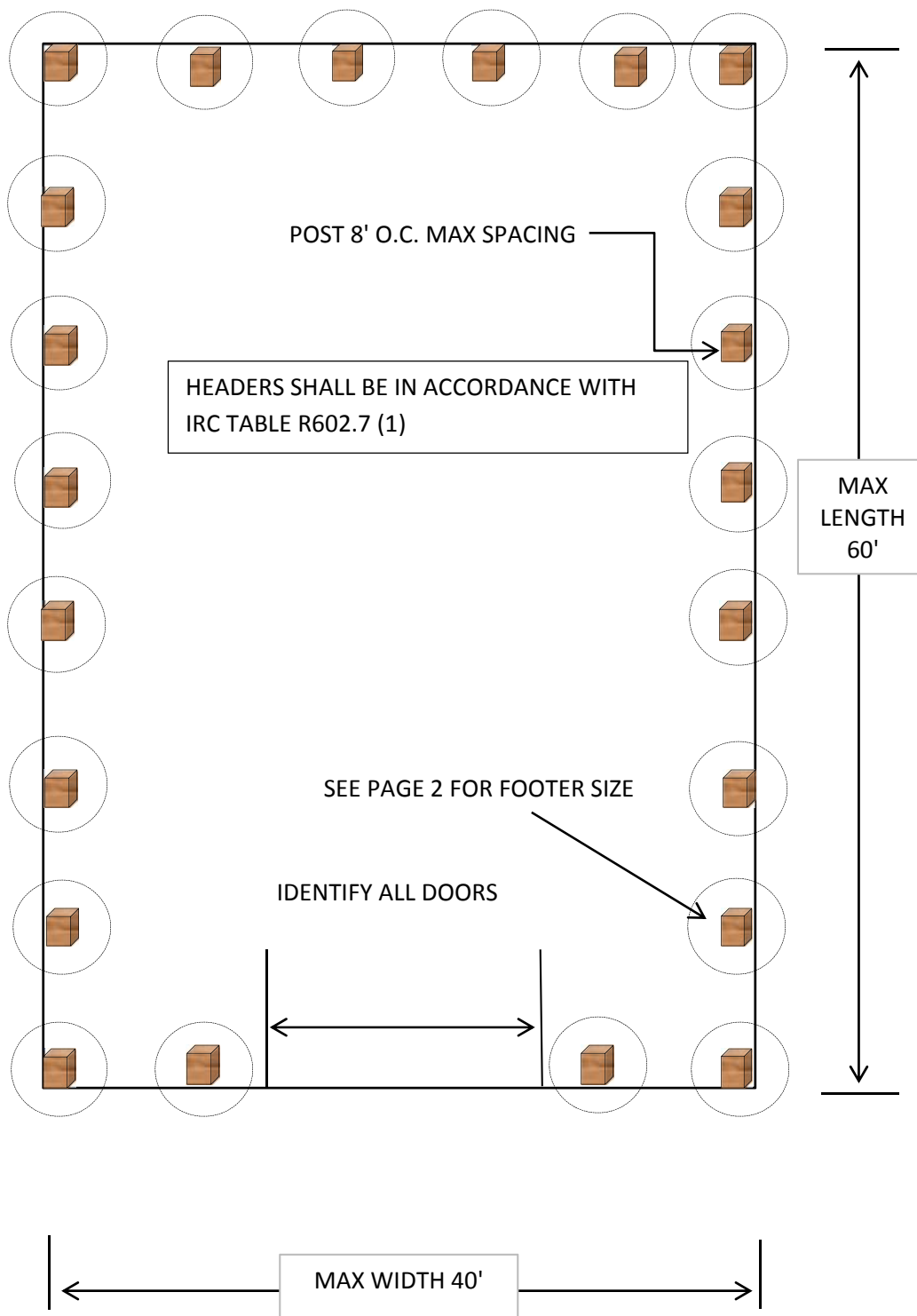


POLE BARN CONSTRUCTION



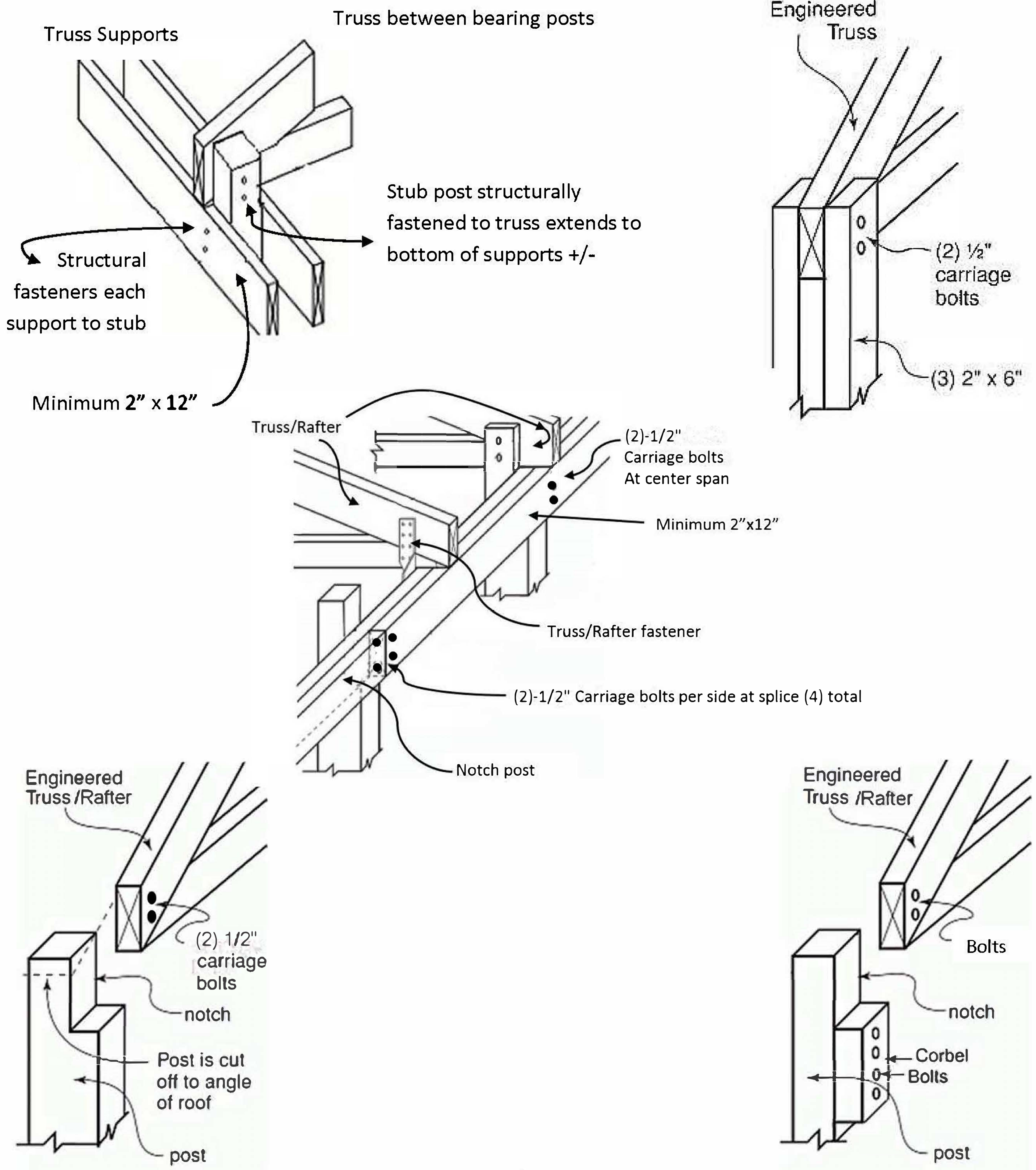


FLOOR PLAN





Approved Truss Connection





PURLIN DETAILS

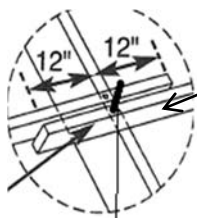
PURLIN SIZE AND SPACING PER TRUSS SPACING

FOR 4' O.C. TRUSSES- 2"X4" PURLINS FLAT @ 24" O.C.

FASTEN WITH
3-16d OR 2-20d
NAILS

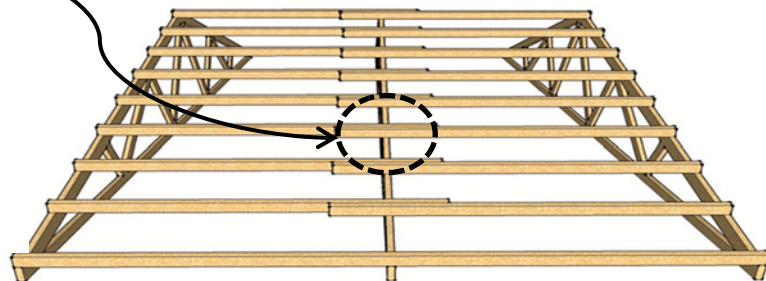


FOR 6' O.C. TRUSSES- 2"X4" PURLINS ON EDGE @ 24" O.C



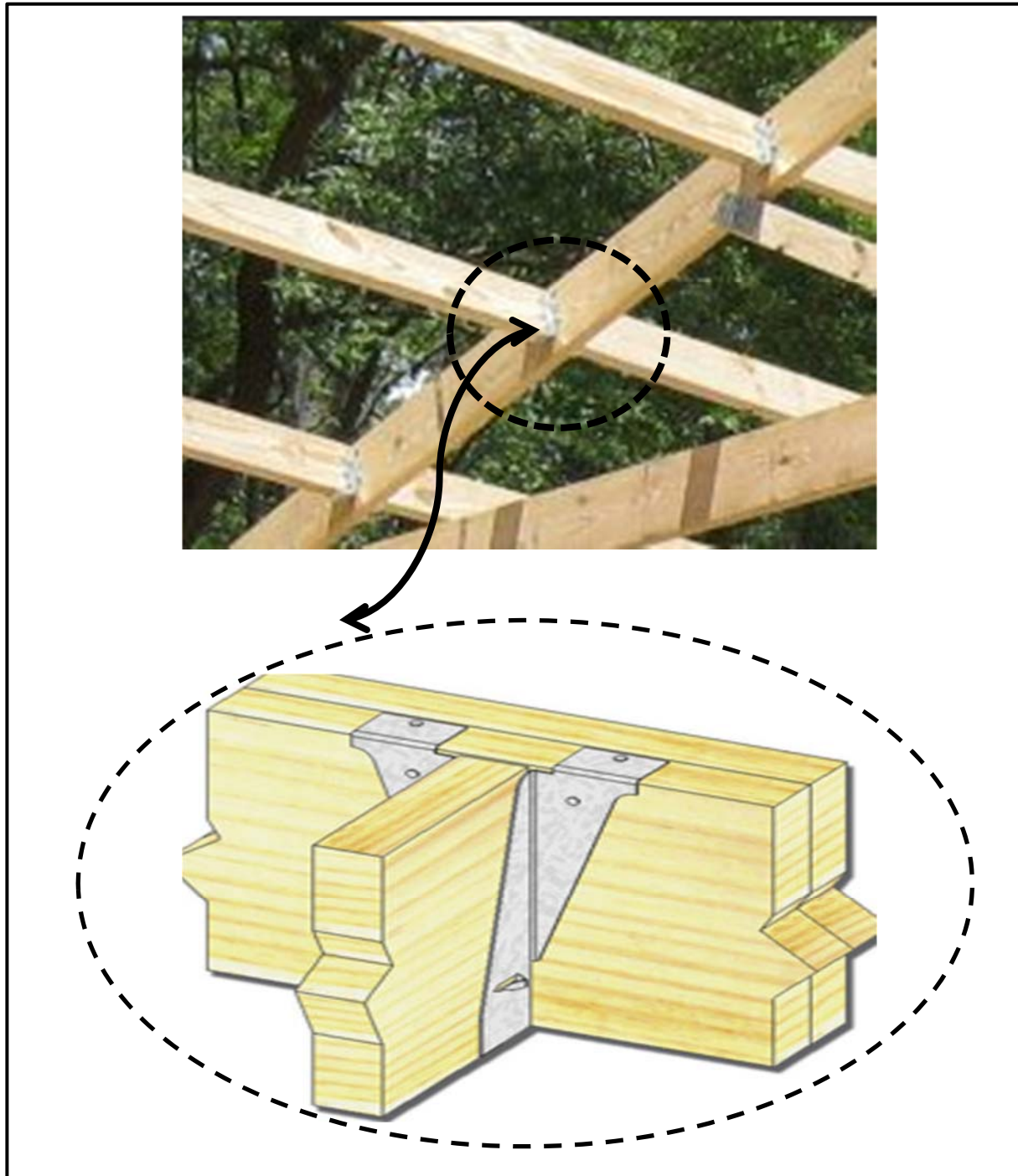
60d RING SHANK OR
EQUIVALENT.

2-16d EACH SIDE OF LAP



PURLIN DETAILS

FOR 8' ON CENTER TRUSSES 2"X6" PURLINS ON LISTED HANGERS





CORNER BRACING

