

TECHNICAL INFORMATION

Cheyenne Civic Center
2101 O'Neil Ave.
Cheyenne, Wyoming 82001
(307) 637-6364
FAX (307) 637-6365

CARPENTRY

Seating

1496 total seats. Chart available on request.
1,000 seats orchestra and loge.
496 seats balcony.

Stage Dimensions

Proscenium: 60 ft wide by 25 ft high.
Stage Right Wing: 14 ft (note placement of patch panel on floor plan).
Stage Left Wing: 18 ft.
Depth: 40'-6".
Cross Over: Up stage, 5 ft wide
Stage Height: 34 inches.
Apron Depth: 7 ft.

Orchestra Pit

The pit is approximately 475 sq. ft. The pit platform can be placed at stage level or working depth. Working orchestra depth is 6 ft below stage level. Basic dimensions are 50 ft wide by 9'-6" across. Utility power (three 20 Amp, 120 V circuits), inter-com, and monitoring are available. Pit entrance is from below the stage. Pit platform is normally positioned at stage level. Advanced coordination is required to position platform at orchestra depth.

Stage Floor

The floor is Oak wood finished in light brown (blonde) stain. Construction is $\frac{3}{4}$ " T&G on three layers of plywood on 1x4 stringers on Neoprene pads. It has good resilience for dance. The floor surface is new (as of July 2001). (See plan for dimensions.) Lag bolting, etc. will be permitted only after advanced coordination.

House Drapery

House Grand Curtain: Rust brown color. Manual operation. Line set #1. Will travel or fly. 35 ft wide by 28 ft high each half.
Grand Border: Same color as House Curtain. Line set #2. 68 ft wide by 16 ft high.
Legs: three (3) pairs, black velour, 25% fullness, 20 ft wide by 28 ft high.
Borders: three (3), black velour, 25% fullness, 78 ft wide by 15 ft high.

Full Stage: two sets, black velour, 25% fullness, 35 ft wide by 28 ft high each half. Travel tracks for both sets.

Cyclorama: Light blue, 66 ft wide by 28 ft high, seamed muslin.

All travelers are controlled from stage right.

Line Set Data

Line Plot: See attachment. Lines sets dedicated to the orchestra shell ceiling units are not available. With advanced coordination the hanging depth of these units can be reduced to 4 inches, front to back. Normal depth of these units in their stored position (including light fixtures) is 14 inches front to back. To date we have had no conflicts with other line sets and the shell. Line set #13 is dedicated to a motorized movie screen and is not generally available without advanced coordination.

Working Heights of Battens: **High trim on all line sets except electrics (line sets 4, 11, 22, & 33) is 50 ft. High trim on electric raceways is 43'-6"**. Low trims on all line sets except #1 is 5 ft. Line #1 low trim is 12 ft.

Counterweight Line Sets.

Battens are 1-1/2 inch OD pipe, nine (9) lead lines each set (250 lbs max rating on each lead line) on 8 ft centers. Electrics are double piped truss.

Type: Single purchase, T-Track, rope purchase lines.

Arbor Capacity: 750 lbs per arbor/line set using 4" brick. 1000 lbs is possible with 6" brick.

Available Weight: 28,000 pounds. 80% of counter weight is 25 lb. bricks. Most are located on the loading gallery. A few 6" bricks (43 lbs) are also available.

Loading Gallery: Stage right, 50 ft above floor.

Lock/Pin Rail: Stage right on floor.

Normal house trims are 21 ft on the borders and 25'-10" on electrics.

A 3,000 lb manual chain puller is available to handle heavy variable loads. This is rigged from the head block to the arbor or arbor to lock rail as required. Call for details.

(8) spot lines are available. 5/8" Multi-line II rope with single head block and one loft block each line. Advanced placement is required.

Motorized Line Sets

Seven line sets are motorized. Vortek Pro. Electrics #1, #2, #3, and scenery lines nos. 3, 9B, 14, and 25. See line plot.

Electric lines are 0-40 ft/min. 2,000 lb

Scenery lines are 0-140 ft/min. 1,200 lb

Computer controlled from stage right.

Ladders

(1) 12 ft aluminum step ladder.

(2) 8 ft wooden step ladder.

(2) 6 ft wooden step ladder.

(1) 6 ft aluminum step ladder.

(1) 24 ft aluminum extension ladder.

(1) 36 ft aluminum extension ladder.

(1) 25 ft Genie AWP-25S. (**Outriggers must be used.**)

Support Areas

Cross Over: Up stage, 5 ft wide. Cross under is through rehearsal room from dressing room hallway stage right to down stage left.

Access: Front of house through dressing room hallway/Greenroom. 39 inch maximum door width. Dressing and Green rooms are located off stage right.

Shop Area: Also serves as loading bay. Workbench, with vice and assorted hand tools are available.

Storage: Very limited. Typically store in wings or loading bay.

Notes:

1. Wood stage floor is 60 ft wide by 45 ft deep in addition to apron. Wings and cross over are concrete.

2. Electric junction panel is floor level stage right. (See plan.)

LIGHTING

Power:

Square D single throw with solid neutral and ground. Lug terminal fittings suitable for copper or aluminum wire. 120/208 Volt, 3 phase 400A/leg. Two (2) of these capacity disconnects are available up stage right. Both services are equipped with Cam-Loks. Ground connector is reversed. Ground “turn-around” and branching T’s are available.

Dimmers:

242 ETC Sensor dimmers, 2.4KW.

House Control Board:

ETC Ion with 40 channel fader wing. Located in booth rear of balcony. House lighting controlled through architectural interface from booth.

Tour Control Boards:

Lighting and automation control systems are placed on the projection platform or in sound technical position. (See detail drawings.)

House Lights: Controlled from light booth during performance, stage right at other times.

Circuits:

242 total at 20A each.

FOH - 50

Floor Pockets - 32

Drop Boxes - 4 with 6 circuits each.

1st Electric - 40

2nd Electric- 20

3rd Electric - 20

4th Electric - 24

Circuit Chart: Available on request.

Front of House Transfer:

DMX512 interface will access all dimmers except house lights. Input is located stage right with 30 ft. of cable to reach road dimmer pack or board.

Front of House Positions:

Beam - 63 ft throw at 45 degree vertical angle.

Box Booms - One each side, 50 ft throw to center stage at 25-40 degrees. This position is not recommended. Focus is done from a 36 ft extension ladder and is very time consuming.

Equipment Inventory:

Front of House

- (42) Source Four ETC 10 degree. 575w.
(20) additional lens tubes (19 degree) are available.

Stage:

- | | |
|--|--|
| (60) ETC ParNel, 575w HPL | (6) Altman 16 inch Beam Projector, 1KW |
| (40) ETC Source Four 26 degree, 575w HPL | (19) Altman 18 inch ERF (Scoop), 1KW |
| (40) ETC Source Four 36 degree, 575w HPL | (14) Altman 3 circuit 6'-6" Strip Lights, Q250PAR lamps |
| (5) ETC Source Four 50 degree, 575w HPL (5) additional 50 degree lens tubes available | Older Altman fixtures are available, call for info. |
| (2) Altman 3.5x8 ERS, 500w | |

Follow Spots: Located in booths left and right of center.

- (2) Strong Supertrouper, carbon arc.
- (2) Strong Supertrouper, Zenon, 2KW.

Hardware:

- (40) ETC S4 pattern holders.
- Color Frames: 6.25 inch, 7.5 inch and 10 inch and 12 inch (FOH)
- Connectors: 3 pin stage, 20A, non-locking.
- (12) 4-way barn doors for 6 inch Fresnels & ParNels
- (12) 4-way barn doors for 8 inch Fresnels
- (8) 10 ft booms with bases
- (36) Side arms
- Cable: 2300 ft of 3 wire type SO w/ 3 pin stage connectors.
- Lengths -- 10 ft, 25 ft, 50 ft, 75 ft and 100 ft. Small assortment of U-blade to 3 pin stage adapters.

Projectors:

- 16 mm Bell & Howell sound. Model 1568B.
- 35 mm Kodak Carousel projector.
- 16 ft by 16 ft motorized, silver beaded projection screen.

Sound

Power: See Lighting for company switch descriptions.

Control Locations:

House board located in booth at rear of balcony.
Road FOH board station at rear of orchestra seating. Area available for equipment is 12 ft wide by 4 ft deep. Addition space available for operators. Equipment stacked above 4 ft 6 inches will create sight line problems. Minimum "snake" run is 150 ft. This general area (to each side) also serves as the handicapped seating area. See detail plan.

House Mic Input Locations (General) XLR connectors.

- | | |
|------------------------|-------------------------------|
| (8) inputs stage right | (8) inputs orchestra pit |
| (8) inputs stage left | (4) inputs up stage wall |
| | (3) inputs rear of auditorium |

Hearing Assist System

FM transmitter (72.1 – 75.9 Mhz) and 12 receivers available. Call for details.

Paging: From stage right to dressing rooms, green room, rehearsal hall and loading bay. From box office to lobbies. Program input in both systems. Company input available.

Inter-com: Clear-Com two channel; Light board, sound board, (4) follow spots, (3) additional belt packs and box office. Portable stations input through patch panel from any mic input as well as selected IC locations throughout hall.

Equipment Inventory

House Mixer – Sound Craft Spirit 8
24 channel input
2 stereo inputs
6 Aux sends, 8 paired groups

Fixed Speakers

Orchestra and Balcony - (6) EV High Freq. Model # HR 9040 and HR 6040
(4) EV Low Freq. Model # TL606D
Loge - (12) EV PRO 12A
Stage Monitors: Two Channel, 70 V, outputs on stage, pit & auditorium.
Monitor Speakers - (2) Electro-Voice, FM-12-2 cabinets. (2) Electro-Voice, M-12-3 cabinets.

Microphones:

| | |
|-------------------|----------------------------|
| (20) Shure SM58 | (4) Audio-Technica AT-815A |
| (10) Shure SM57 | (2) Audio-Technica AT-835 |
| (5) Crown PCC 160 | (4) Telex Wireless |

Playback:

Denon CD-R model DN-C550R
Sony DAT model PCM-2300
Denon CD deck model DN-C620
(1) Pioneer Cassette players model CT-S601R
Akai reel to reel, 10 inch reel, model # GX-625
Pioneer turn table

Signal Processors:

(3) Beringer 31 Band 1/3 Octave, 2 channel EQ
(2) Rane GE 14 2/3 octave Equalizers, 2 channel.
(4) Channels of compression, dbx-1046.
(6) Channels of Feedback control.

House Amplifiers:

Yamaha P2201, P2100, and P2050. Permanently mounted.

Cable (microphone)

1000 ft total in 25 ft, 50 ft and 100 ft lengths.

(1) 24 channel 75 ft snake.

Limited number of 1/4 inch adapters.

Direct Boxes:

(3) Rapco DB-100

(2) Behringer Ultra-Pro Di racks, 4 channels each.

Sound Notes:

1. House systems have digital delays as required.

2. House EQ is set for voice reinforcement and will not be changed.

3. Hall has excellent acoustics.

4. Call for additional equipment rental information.

PROPS

Orchestra Pit

See Carpentry for dimensions, etc.

Music

Musician Chairs: 70 Wenger professional (8 Cello chairs)

Chairs: 80 padded folding, orange in color.

Stands: 60 Wenger Manhasset style, black color.

Stand Lights: (35) 15w. Dimmable through lighting system.

Conductor's Podium: 3 ft by 3 ft by 8 inch, with back rail.

Conductor's Music Stand: Adjustable with two shelves.

Orchestra Shell

Wenger full stage with side towers, back wall and ceiling. Lighting is integral to ceiling sections. Call for details.

Platforms: Wenger orchestra and choral risers.

(4) 4'x8'x8"

(2) 4'x6'x24"

(2) 4'x6'x8"

(4) 4'x8'x32"

(4) 4'x8'x16"

Misc. corner units.

(2) 4'x6'x16"

(8) 6' three step choral risers.

(4) 4'x8'x24"

Dance Floor: None available. (see carpentry for floor construction details.)

Step Units:

(1) 2-step, steel, 4' w/ 8" rise

(1) 3-step, steel, 4' w/ 8" rise

(2) 3-step, wood, 4' w/ 8" rise

(1) 4-step, wood, 4' w/ 8" rise

Lectern

One (1) available. With light and clock. Brown color.

Tables: Folding, brown color. Limited skirting available. (2) 30"x6'; (2) 30"x8'

WARDROBE

Dressing Rooms: Located stage right. Entrance to stage from up stage right. Green Room is adjacent.

(2) Chorus rooms with mirrors, make-up lights, sinks, toilet and shower.

(4) Star rooms with mirrors, make-up lights, toilet and sinks.

Wardrobe Room A dedicated wardrobe room is not available. Typically one of the dressing rooms or green room is used. There are no additional costs to utilize equipment.

(2) Irons with ironing boards.

(1) Steamer

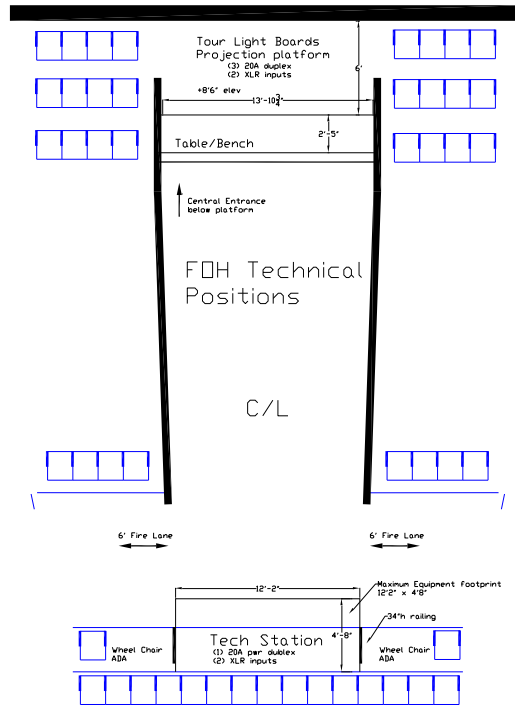
(2) Washers located in loading bay. (Center does not provide soap, etc.)

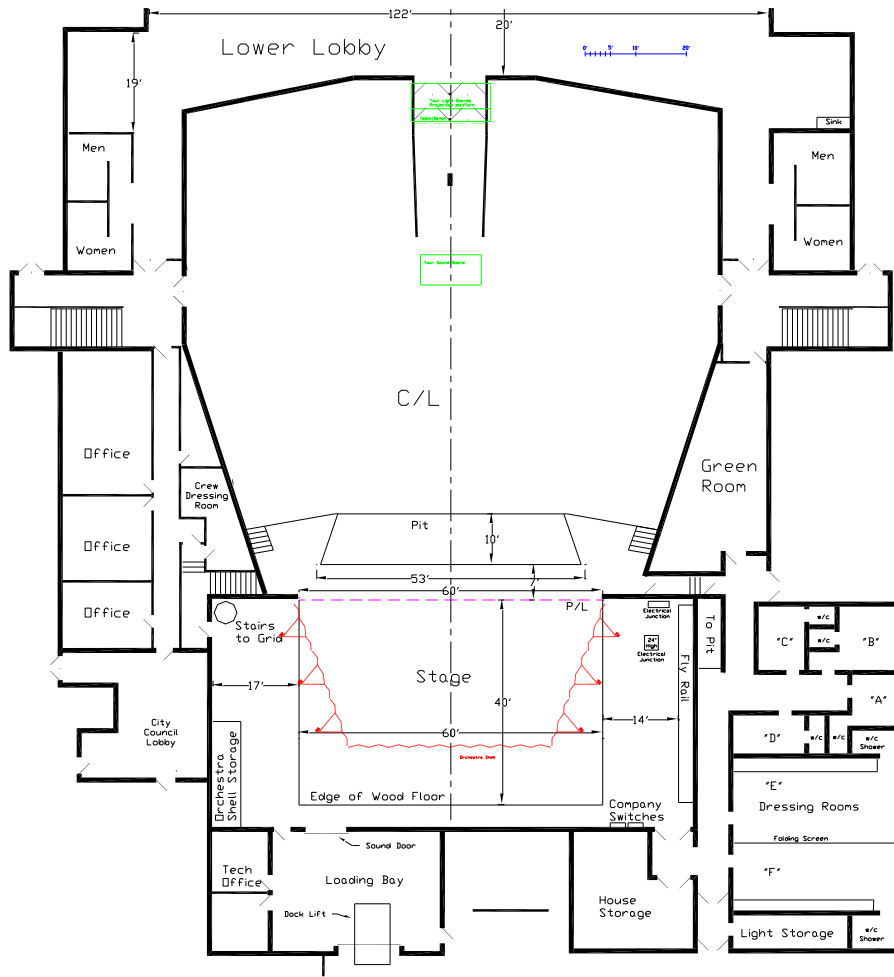
(2) Dryers in loading bay.

(6) 6 ft rolling racks available.

Quick Change Booths: Temporary enclosures are assembled when needed. Two (2) 18 inch by 36 inch portable mirrors are available.

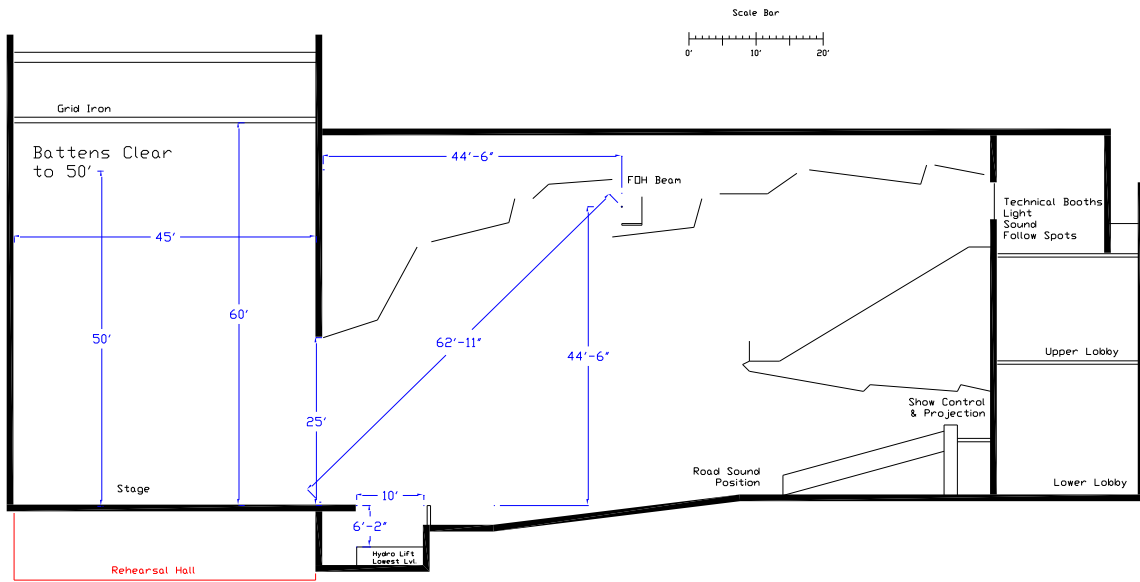
FOH Tech Positions



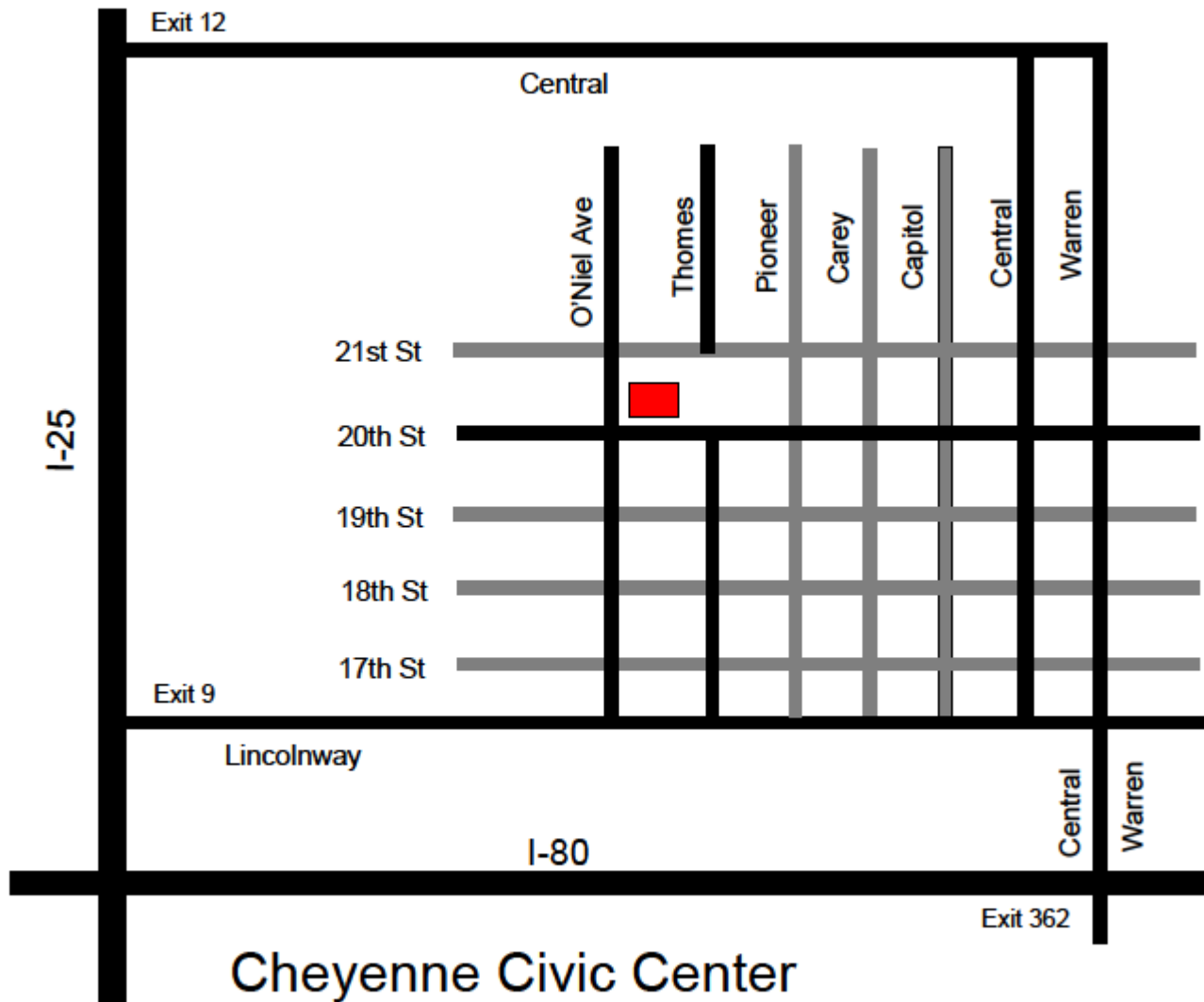


Basic Floor Plan, Cheyenne Civic Center

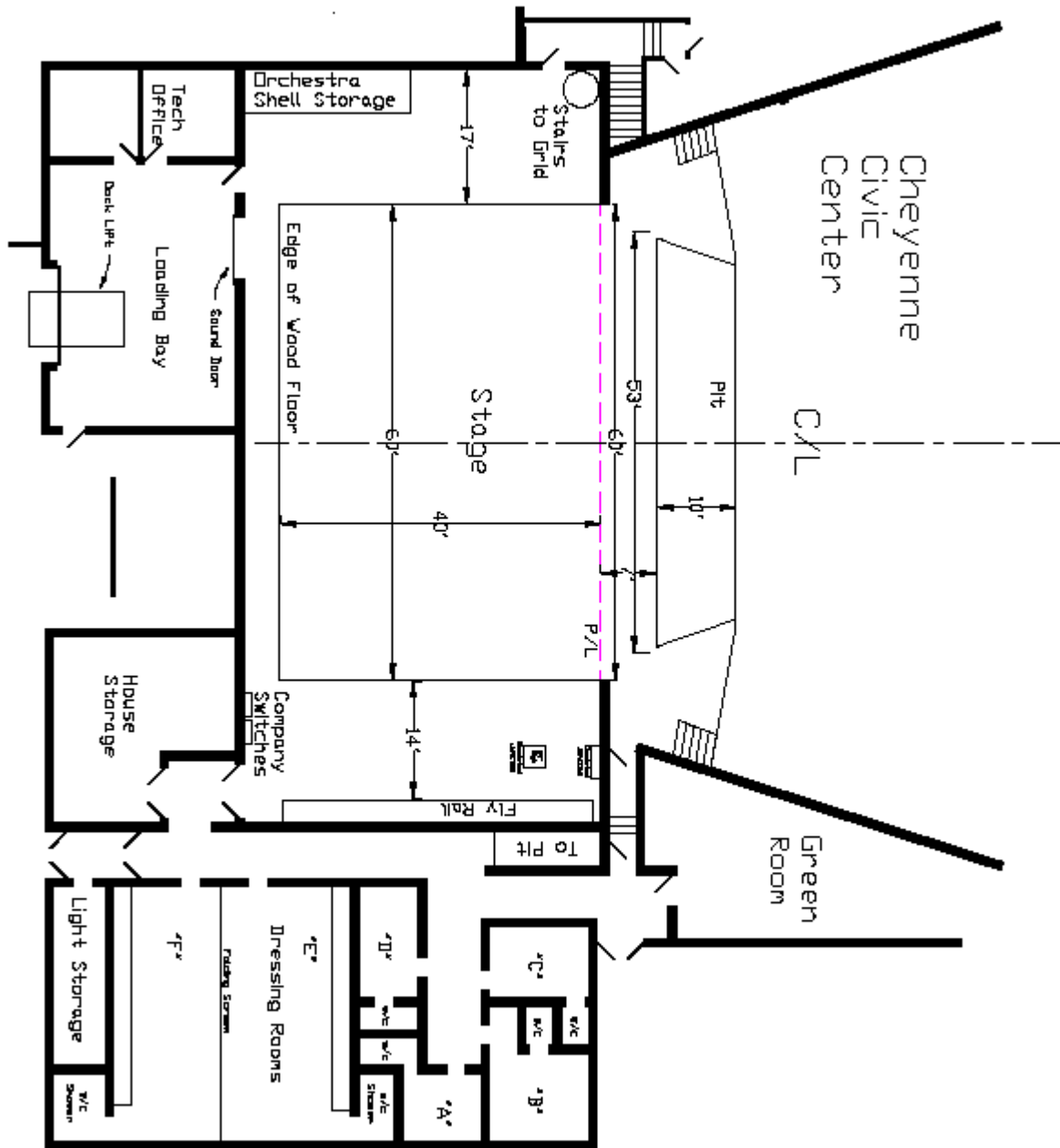
Cheyenne Civic Center
 Cross Section at C/L



Cross Section, Cheyenne Civic Center



Location Strip Map, Cheyenne Civic Center.



Stage Detail, Cheyenne Civic Center

Line Plot, Cheyenne Civic Center

| Ln # | US P/L | House Hang | Type |
|------|---------|------------------|------------|
| 1 | 1'-0" | Grand Curtain | CW |
| 2 | 2'-0" | Grand Border | CW |
| 3 | 2'-9" | #1 Legs | Vortek 140 |
| 4 | 4'-3" | #1 Electric | Vortek 40 |
| O1 | 5'-6" | #1 Shell Cloud | CW |
| 5 | 6'-10" | | CW |
| 6 | 7'-8" | | CW |
| 7 | 8'-8" | | CW |
| 8 | 9'-9" | | CW |
| 9 | 10'-10" | #2 Border | CW |
| 9b | 11'-6" | #2 Legs | Vortek 140 |
| 10 | 11'-8" | | CW |
| 11 | 13'-0" | #2 Electric | Vortek 40 |
| 12 | 13'-11" | | CW |
| 13 | 14'-11" | Movie Screen | CW |
| O2 | 15'-9" | #2 Shell Cloud | CW |
| 14 | 17'-0" | Concert Traveler | Vortek 140 |
| 15 | 17'-7" | | CW |
| 16 | 18'-3" | | CW |
| 17 | 18'-11" | | CW |
| 18 | 19'-11" | | CW |
| 19 | 20'-11" | | CW |
| 20 | 21'-11" | #3 Border | CW |
| 21 | 22'-8" | #3 Legs | CW |
| 22 | 24'-0" | #3 Electric | Vortek 40 |
| 23 | 25'-0" | | CW |
| O3 | 25'-6" | #3 Shell Cloud | CW |
| 24 | 26'-8" | | CW |
| 25 | 27'-3" | Olio Traveler | Vortek 140 |
| 26 | 27'-11" | | CW |
| 27 | 28'-7" | | CW |
| O4 | 29'-3" | Shell Back Wall | CW |
| 28 | 30'-2" | | CW |
| 29 | 31'-0" | | CW |
| 30 | 31'-11" | | CW |
| 31 | 32'-11" | #4 Border | CW |
| 32 | 33'-8" | #4 Legs | CW |
| 33 | 35'-4" | #4 Electric | CW |
| 34 | 36'-6" | | CW |
| 35 | 37'-10" | Back Traveler | CW |
| 36 | 38'-10" | Cyclorama | CW |

Notes

*

High Trim on Electrics (# 4, 11, 22 & 33) is 39'-9"
 High Trim on Vortek Scenery sets (#3, 9b, 14, & 25) is 54'-0"
 First Available line set is #3. (#2 with special coordination)
 "CW" Counter-weight line sets.

Vortek Pro Series Motorized, 140 fpm

Vortek Pro Series Motorized, 40 fpm. (Electric raceways)